

WORLD OF PROFILES





Profile Wish
Choose your own
cover design.



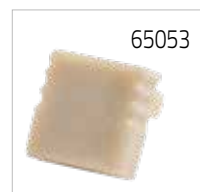
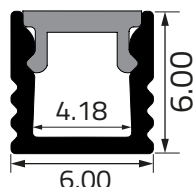
suitable for Article no. 61215 on Page 11

Example designs

Aluminum profile 6/6

aluminum profile, extremely small, internal size for strips up to a width of 3.5 mm

- for indoor use
- material: aluminum anodised
- frosted, for a homogeneous lighting
- material cover: polycarbonate
- delivery notice: delivery without cover, end caps and mounting clamps - please order them separately
- **not suitable for VARDAflex in-feeders and direct connectors**



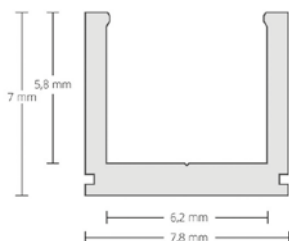
Type	Length m	Article no.
aluminum profile 6/6	2	65050
cover frosted	2	65051

Accessories	Article no.
end-cap	65053
end cap in-feeder	65052
mounting clamp - metal	65054

Aluminum profile 8/7

aluminum profile, extremely small, without aluminum visible edge, internal size for strips up to a width of 3.5 mm

- for indoor and outdoor use (with 61099)
- material: aluminum anodised
- flat cover/ IP-cover channel
- material cover: polycarbonate
- delivery notice: delivery without cover and end caps - please order them separately
- **not suitable for VARDAflex in-feeders and direct connectors**



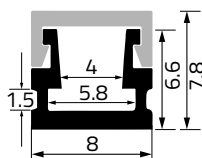
Type	Length m	Article no.
aluminum profile 8/7	2	61005
cover frosted	2	61098
IP-cover channel frosted	2	61099

Accessories	Length m	Article no.
silicone end cap in-feeder		61089
silicone end cap		61088
cooling strip for 61099	2	61090

Aluminum profile 8/8

aluminum profile, extremely small, without aluminum visible edge, internal size for strips

- for indoor use
- material: aluminum anodised
- new overlapping cover, frosted, for a homogeneous lighting
- material cover: polycarbonate
- delivery notice: delivery without cover, end caps and mounting clamps - please order them separately
- **not suitable for VARDAfex in-feeders and direct connectors**



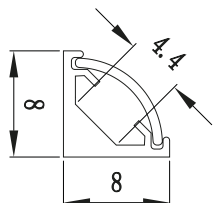
Type	Length m	Article no.
aluminum profile 8/8	2	69415
cover frosted	2	69478

Accessories	Article no.
end cap in-feeder	69468
mounting clamp - metal	69460

Aluminum profile 8/8

corner profile, internal size for strips up to a width of 3.5 mm

- for indoor use
- material: aluminum anodised
- material cover: polycarbonate
- delivery notice: delivery without cover, end caps and mounting clamps - please order them separately



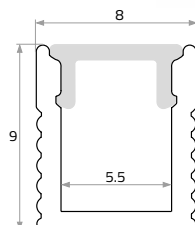
Type	Length m	Article no.
aluminum profile 8/8	2	61645
cover opal white	2	61678

Accessories	Article no.
end cap in-feeder	61668
mounting clamp - stainless steel	61660

Aluminum profile 8/9

aluminum profile, extremely small, internal size for strips up to a width of 5 mm

- for indoor use
- material: aluminum anodised
- flat cover
- material cover: polycarbonate
- delivery notice: delivery without cover, end caps and mounting clamps - please order them separately
- **not suitable for VARDAfex in-feeders and direct connectors**



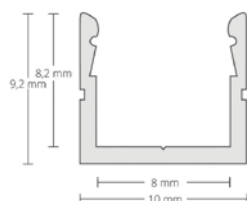
Type	Length m	Article no.
aluminum profile 8/9	2	65375
aluminum profile 8/9	3	65378
cover frosted	2	65388
cover frosted	3	65387

Accessories	Article no.
end cap in-feeder	65381
end cap	65382
mounting clamp - metal	65380

Aluminum profile 10/9

standard aluminum profile, slim, internal size for strips up to a width of 6 mm

- for indoor use
- material: aluminum anodised
- flat cover
- material cover: polycarbonate
- delivery notice: delivery without cover, end caps and mounting clamps - please order them separately
- **not suitable for VARDAfex in-feeders and direct connectors**



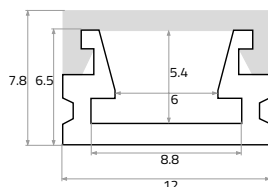
Type	Length m	Article no.
aluminum profile 10/9	2	61105
cover frosted	2	61198

Accessories	Article no.
silicone end cap in-feeder	61189
silicone end cap	61188
mounting clamp - metal	61180

Aluminum profile 12/8

**aluminum profile, extremely flat, without aluminum visible edge,
internal size for strips up to a width of 6 mm**

- for indoor use
- material: aluminum anodised
- new overlapping cover, frosted, for a homogeneous lighting
- material cover: polycarbonate
- delivery notice: delivery without cover, end caps and mounting clamps - please order them separately
- **not suitable for VARDaFlex in-feeders and direct connectors**



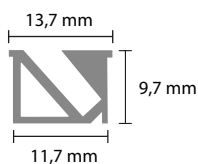
Type	Length m	Article no.
aluminum profile 12/8	2	69405
cover frosted	2	69498

Accessories	Article no.
end cap in-feeder	69488
mounting clamp - metal	69480

Aluminum profile 13/9K

standard aluminum profile, slim, internal size for strips up to a width of 6 mm

- for indoor use
- material: aluminum anodised, grey
- cover
- material cover: silicon
- delivery notice: delivery without cover, end caps and mounting clamps - please order them separately
- **not suitable for VARDaFlex in-feeders and direct connectors**



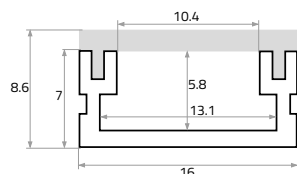
Type	Length m	Article no.
aluminum profile 13/9K	2	61125
cover silicon	2	61129

Accessories	Article no.
silicone end cap in-feeder	61191
silicone end cap	61192

Aluminum profile 16/9

aluminum profile, flat, without aluminum visible edge,
internal size for strips up to a width of 12.2 mm

- for indoor use
- material: aluminum anodised
- new overlapping cover, frosted, for a homogeneous lighting
- material cover: polycarbonate
- delivery notice: delivery without cover, end caps and mounting clamps - please order them separately



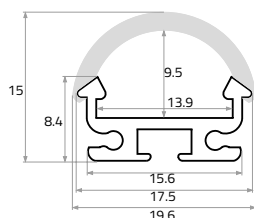
Type	Length m	Article no.
aluminum profile 16/9	2	69425
aluminum profile 16/9	3	69428
cover frosted	2	69458
cover frosted	3	69459

Accessories	Article no.
end cap in-feeder	69448
end cap	69449
mounting clamp - metal	69440

Aluminum profile 16/15

flat circular profile, internal size for strips up to a width of 13 mm

- for indoor use
- material: aluminum anodised
- semicircular cover for homogeneous lighting
- material cover: polycarbonate
- delivery notice: delivery without cover, end caps and mounting clamps - please order them separately



Type	Length m	Article no.
aluminum profile 16/15	2	69105
cover, semicircular, frosted	2	69189

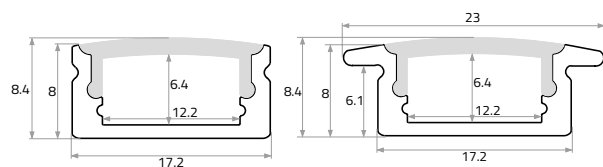
Accessories	Article no.
end cap in-feeder	69178
end cap	69179
mounting clamp - metal	69190
suspended wire	69191



Photo:XtravaganT@fotolia.com

Aluminum profile 17/8 and aluminum collar profiles 17/8K standard aluminum profile in aluminum, white (RAL9016) and black (RAL9005), internal size for strips up to a width of 12.2 mm

- for indoor and outdoor use
- material: aluminum anodised
- new slightly semicircular cover with optimized, optical properties
- material cover: PMMA
- delivery notice: delivery without cover, end caps and mounting clamps - please order them separately
- with IP-protected LED strip also suitable for outdoor use

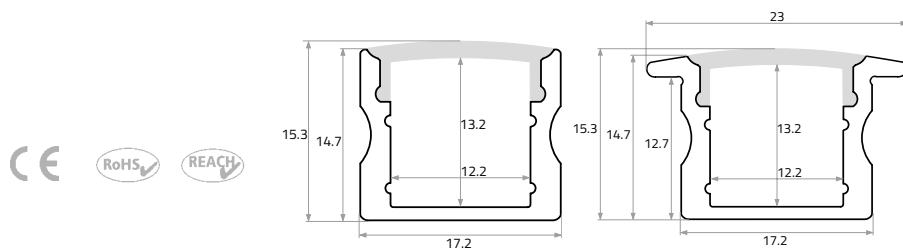


Type	Length m	Article no. aluminum	Article no. white	Article no. black
aluminum profile 17/8	2	65505	65506	65502
aluminum profile 17/8	3	65508	65509	65503
aluminum profile 17/8K	2	65605	-	-
aluminum profile 17/8K	3	65608	-	-
Cover	Length m	Article no.		
cover clear	2	65597		
cover semi-frosted	2	65594		
cover opal white	2	65592		
cover clear	3	65577		
cover semi-frosted	3	65574		
cover opal white	3	65572		
cover blacklight	2	62590		
cover blacklight	3	62591		
Accessories		Article no. aluminum	Article no. white	Article no. black
end cap in-feeder		65548	65546	65544
end cap		65549	65547	65545
end cap in-feeder collar		65648	-	-
end cap collar		65649	-	-
mounting clamp - metal		65540	-	-
mounting clamp - plastic		65541	-	-

Aluminum profile 17/15 and collar profiles 17/15K

standard aluminum profile in aluminum, white (RAL9016) and black (RAL9005),
internal size for strips up to a width of 12.2 mm

- for indoor and outdoor use
- material: aluminum anodised
- new slightly semicircular cover with optimized, optical properties
- material cover: PMMA
- delivery notice: delivery without cover, end caps and mounting clamps - please order them separately
- with IP-protected LED strip also suitable for outdoor use



Type	Length m	Article no. aluminum	Article no. white	Article no. black
aluminum profile 17/15	2	65515	65516	65512
aluminum profile 17/15	3	65518	65519	65513
aluminum profile 17/15	4,5	65517		
aluminum profile 17/15K	2	65615	-	-
aluminum profile 17/15K	3	65618	-	-
Cover	Length m	Article no.		
cover clear	2			65597
cover semi-frosted	2			65594
cover opal white	2			65592
cover clear	3			65577
cover semi-frosted	3			65574
cover opal white	3			65572
cover backlight	2			62590
cover backlight	3			62591
Accessories		Article no. aluminum	Article no. white	Article no. black
end cap in-feeder		65538	65536	65534
end cap		65539	65537	65535
end cap in-feeder collar		65658	-	-
end cap collar		65659	-	-
mounting clamp - metal		65530		
mounting clamp - plastic		65531		

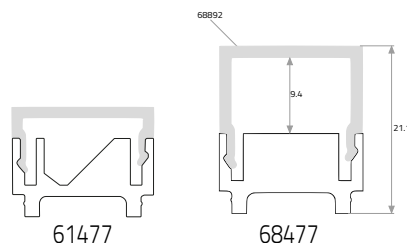
Aluminum profile 18/10 + asymmetric 18/10

**standard aluminum profile, wide selection of covers and mounting clamps,
internal size for strips up to a width of 11 mm**

- for indoor use
- material: aluminum anodised
- different accessories
- material cover: polycarbonate
- delivery notice: delivery without cover, end caps and mounting clamps - please order them separately



68477 + 68892



Type	Length m	Article no.
aluminum profile 18/10	2	68477
aluminum profile 18/10 asymmetric	2	61477

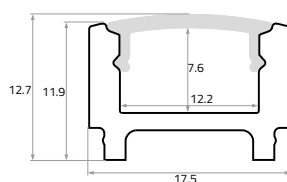
Cover	Length m	Article no.
cover clear asymmetric	2	68897
cover semi-frosted asymmetric	2	68894
cover frosted	2	62898
cover frosted, high	2	68892

Accessories	Length m	Article no.
end cap in-feeder, high		60758
end cap, high		68759
mounting clamp, aluminum		68478
mounting profile	2	68476

Aluminum profile 18/12

**standard aluminum profile, cover and mounting clamps,
internal size for strips up to a width of 12 mm**

- for indoor use
- material: aluminum anodised
- material cover: polycarbonate
- delivery notice: delivery without cover, end caps and mounting clamps - please order them separately



Type	Length m	Article no.
aluminum profile 18/12	2	68475

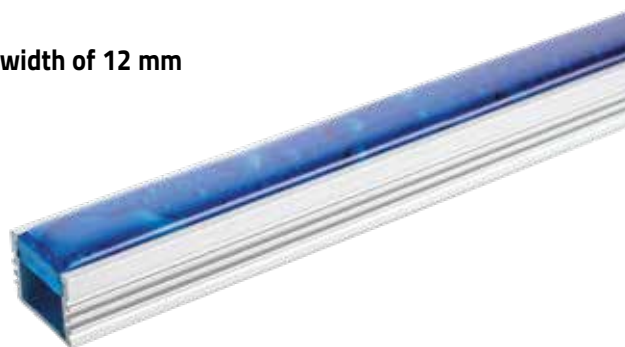
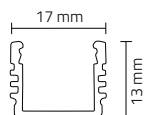
Cover	Length m	Article no.
cover frosted	2	68598

Accessories	Length m	Article no.
end cap in-feeder		68753
end cap		68754
mounting clamp, aluminum		68478
mounting profile	2	68476

Aluminum profile 17/13

aluminum profile including covers, internal size for strips up to a width of 12 mm

- for indoor use
- material: aluminum anodised
- cover frosted, wish-cover
- delivery notice: delivery without cover, end caps and mounting clamps - please order them separately

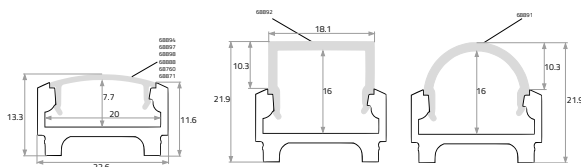


Type	Length m	Article no.	Accessories	Length m	Article no.
aluminum profile 17/13	2	61215	end cap in-feeder, grey		61265
aluminium profile, white	2	61216	end cap in-feeder, black		61269
aluminium profile, black	2	61212	end cap in-feeder, white		61267
cover, frosted	2	61252	end cap, grey		61264
cover, wish	2	61260	end cap in-feeder, black		61268
mounting profile	2	61261	end cap in-feeder, white		61266

Aluminum profile 23/12 and collar profiles 23/12K

standard aluminum profile, wide selection of covers and mounting clamps, internal size for strips up to a width of 18.2 mm

- for indoor use (outdoor use = PMMA)
- material: aluminum anodised
- different accessories
- material cover: polycarbonate and PMMA
- delivery notice: delivery without cover, end caps and mounting clamps - please order them separately
- with IP-protected LED strip also suitable for outdoor use (PMMA cover)



mounting clamp, aluminum
68490

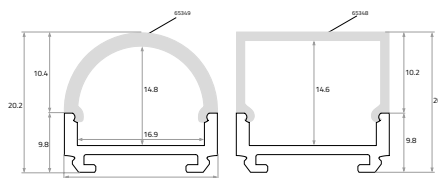
Type	Length m	Article no.	Accessories	Length m	Article no.
aluminum profile 23/12	2	68405	end cap in-feeder		68487
aluminum profile 23/12	3	68408	end cap		68488
aluminium profile 23/12	4	68409	end cap in-feeder, high		68498
aluminum profile 23/12K	2	68425	end cap, high		68497
			end cap in-feeder, semicircular		68496
			end cap, semicircular		68495
			end cap in-feeder collar		68067
			end cap collar		68068
			mounting clamp ceiling mounting, aluminum		68489
			mounting clamp, aluminum		68490
			mounting clamp Z-form for cabinet mounting, aluminum		68499
			mounting clamp corner 30° and 60°, aluminum		68479
			mounting profile	2	68440
			mounting clip adjustable		68441

Cover	Length m	Article no.
cover clear	2	68897
cover semi-frosted	2	68894
cover frosted	2	62898
cover frosted	3	62888
cover frosted flat	2	68893
cover frosted, PMMA (outdoor use possible)	2	68760
cover frosted, semicircular	2	68891
cover frosted, high	2	68892
cover lens 15°	2	68872
cover lens 30°	2	68873
cover lens 60°	2	68874
blind cover, black	2	68871

Aluminum profile 20/15

aluminum profile including mounting rail and high covers, internal size for strips up to a width of 16 mm

- for indoor and outdoor use
- material: aluminum anodised
- semicircular and rectangular cover, frosted, for a homogeneous lighting
- material cover: PMMA
- delivery notice: delivery without cover, end caps and mounting clamps - please order them separately
- with IP-protected LED strip also suitable for outdoor use

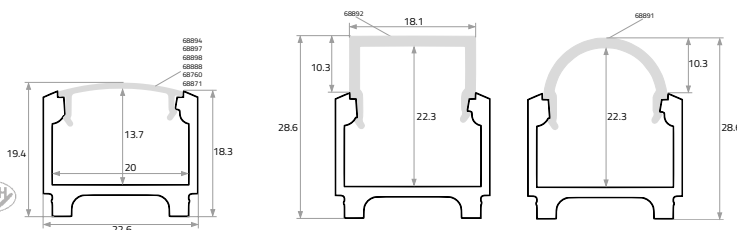


Type	Length m	Article no.	Accessories	Length m	Article no.
aluminum profile 20/15	2	65305	end cap in-feeder semicircular H20		65368
cover, semicircular H20, frosted	2	65349	end cap semicircular H20		65369
cover, H20, frosted	2	65348	end cap in-feeder H20		65398
			end cap H20		65399
			mounting profile	2	65390

Aluminum profile 23/18 and collar profile 23/18K

standard aluminum profile, wide selection of covers and mounting clamps, internal size for strips up to a width of 18.2 mm

- for indoor use (outdoor use = PMMA)
- material: aluminum anodised
- different accessories
- material cover: polycarbonate and PMMA
- delivery notice: delivery without cover, end caps and mounting clamps - please order them separately
- with IP-protected LED strip also suitable for outdoor use (PMMA cover)

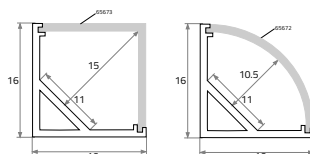


Type	Length m	Article no.	Accessories	Length m	Article no.
aluminum profile 23/18	2	68415	end cap in-feeder		68482
aluminum profile 23/18	3	68418	end cap		68483
aluminum profile 23/18K	2	68435	end cap in-feeder, high		68494
Cover	Length m	Article no.	end cap, high		68493
cover clear	2	68897	end cap in-feeder, semicircular		68492
cover semi-frosted	2	68894	end cap, semicircular		68491
cover frosted	2	62898	end cap in-feeder collar		68077
cover frosted	3	62888	end cap collar		68078
cover frosted flat	2	68893	mounting clamp ceiling mounting, aluminum		68489
cover frosted, PMMA (outdoor use possible)	2	68760	mounting clamp, aluminum		68490
cover frosted, semicircular	2	68891	mounting clamp Z-form for cabinet mounting, aluminum		68499
cover frosted, high	2	68892	mounting clamp corner 30° and 60°, aluminum		68479
cover lens 15°	2	68872	mounting profile	2	68440
cover lens 30°	2	68873	mounting clip adjustable		68441
cover lens 60°	2	68874			
blind cover, black	2	68871			

Aluminum corner profile 16/16E

small corner profile, internal size for strips up to a width of 11 mm

- for indoor and outdoor use
- material: aluminum anodised
- circular and corner 90° cover for homogeneous lighting
- material cover: PMMA
- delivery notice: delivery without cover, end caps and mounting clamps - please order them separately
- with IP-protected LED strip also suitable for outdoor use

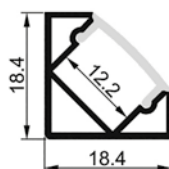


Type	Length m	Article no.	Accessories	Article no.
aluminum profile 16/16E	2	65625	end cap in-feeder rand	65688
aluminum profile 16/16E	3	65628	end cap rand	65689
cover circular opal white	2	65672	end cap in-feeder corner	65788
cover circular opal white	3	65678	end cap corner	65789
cover corner opal white	2	65673	mounting clamp	65680

Aluminum corner profile 18/18E

corner profile, internal size for strips up to a width of 12.2 mm

- for indoor and outdoor use
- material: aluminum anodised
- flat cover
- material cover: PMMA
- delivery notice: delivery without cover, end caps and mounting clamps - please order them separately
- with IP-protected LED strip also suitable for outdoor use

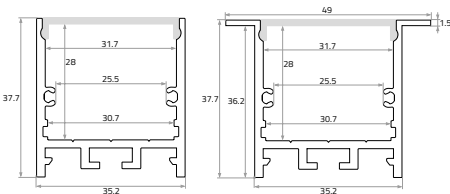


Type	Length m	Article no. aluminum	Article no. white	Article no. black	Accessories	Article no. aluminum	Article no. white	Article no. black
aluminum profile 18/18E	2	65635	65636	65632	end cap in-feeder	65668	65666	65664
aluminum profile 18/18E	3	65638	65639	65633	end cap	65669	65667	65665
Cover	Length m	Article no.			mounting clamp - metal	65480	-	-
cover clear	2	65597			mounting clamp - PC	65481	-	-
cover semi-frosted	2	65594						
cover opal white	2	65592						
cover clear	3	65577						
cover semi-frosted	3	65574						
cover opal white	3	65572						

Aluminum profile 35/35 and collar profile 35/35K

suitable as pendant and recessed luminaire,
internal size for strips up to a width of 30 mm

- for indoor and outdoor use
- material: aluminum anodised
- flat cover
- material cover: PMMA
- delivery notice: delivery without cover, end caps, mounting clamps, suspended wire and profile connector - please order them separately
- with IP-protected LED strip also suitable for outdoor use (PMMA cover)



Type	Length m	Article no. aluminum	Article no. white	Article no. black
aluminum profile 35/35	2	65935	65936	65932
aluminum profile 35/35	3	65938	65939	65933
aluminum profile 35/35K	2	65925	65926	65922
aluminum profile 35/35K	3	65928		
Cover		Article no.		
cover clear	2			65997
cover semi-frosted	2			65994
cover opal white	2			65992
cover blacklight	2			62980
cover clear	3			65987
cover semi-frosted	3			65984
cover opal white	3			65982

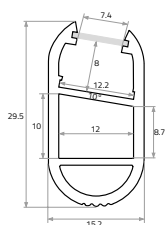
Accessories	Article no. aluminum	Article no. white	Article no. black
end caps	65978	65976	65977
end caps collar	65968	65966	65967
profile connector 90°			65974
profile connector 180° for line connection			65975
mounting clamp			65970
mounting clamp with springs			65960
suspended wire			65973



Aluminum clothes rail profile 15/30S

aluminum clothes rail profiles for direct lighting, internal size for strips up to a width of 12 mm

- for indoor use
- material: aluminum anodised
- subadjacent cover
- material cover: polycarbonate
- cover can be easily fitted and dismantled by clicking in at the front
- delivery notice: delivery without cover and fastenings - please order them separately



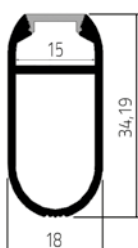
Type	Length m	Article no.
aluminum profile 15/30S	2	69535
cover opal white	2	69572

Accessories	Article no.
fastening wall - metal	69569
fastening ceiling - metal	69560

Aluminum clothes rail profile 18/34S

aluminum clothes rail profiles for direct lighting, internal size for strips up to a width of 15 mm

- for indoor use
- material: aluminum anodised
- flat cover
- material cover: polycarbonate
- delivery notice: delivery without cover and fastenings - please order them separately



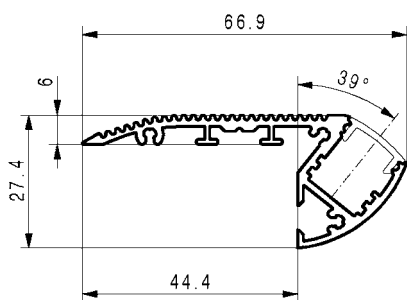
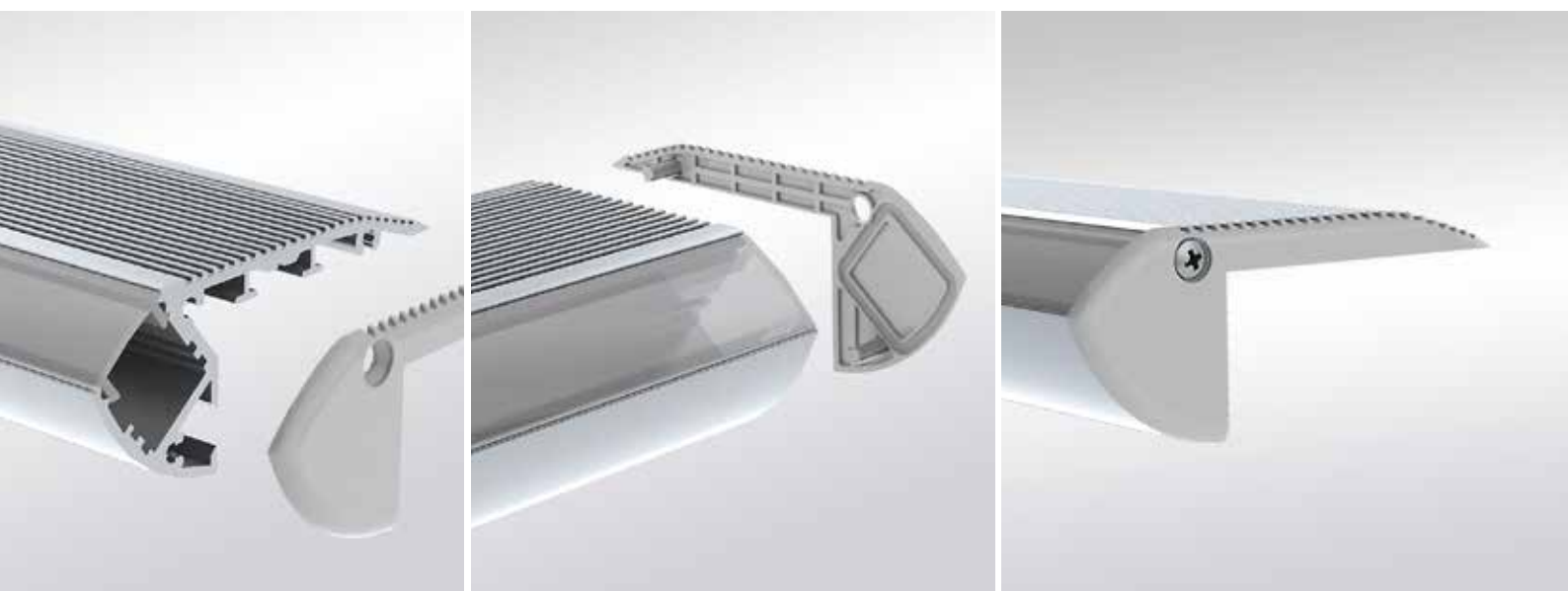
Type	Length m	Article no.
aluminum profile 18/34S	2	69525
cover opal white	2	69598

Accessories	Article no.
fastening wall - metal	69589

Aluminum profile SlimLine Stair

aluminum profile, internal size for strips up to a width of 12.2 mm

- for indoor use
- material: aluminum anodised
- new slightly arched cover with optimised optical properties
- cover frosted, clear or semi-frosted
- material cover: polycarbonate, UV-resistant and rupture-free
- delivery note: delivery without cover and end caps - please order them separately
- for accident prevention reasons, we would suggest bolting the stair profiles
- **not suitable for VARDaflex in-feeders and direct connectors**

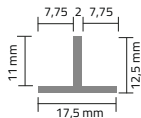


Type	Length m	Article no.
aluminum profile SlimLine Stair	1	68180
aluminum profile SlimLine Stair	2	68181
cover clear	2	68597
cover frosted	1	68596
cover frosted	2	68598
cover semi-frosted	2	68594
Accessories		Article no.
end-cap SlimLine Stair, left		68184
end-cap SlimLine Stair, right		68185

Aluminum profile 18/13B

flexible aluminum profile, for strips up to a width of 10 mm

- for indoor use
- material: aluminum anodised

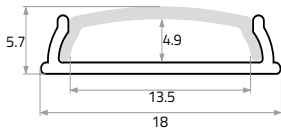


Type	Length m	Article no.
aluminum profile 18/13B	2	65215

Aluminum profile 18/6B

flexible aluminum profile, internal size for strips up to a width of 10 mm

- for indoor use
- material: aluminum anodised
- semicircular cover, frosted for a homogeneous lighting
- material cover: polycarbonate
- minimum bending diameter: 304.8 mm
- delivery notice: delivery without cover, end caps and mounting clamps - please order them separately
- **not suitable for VARDaflex in-feeders and direct connectors**



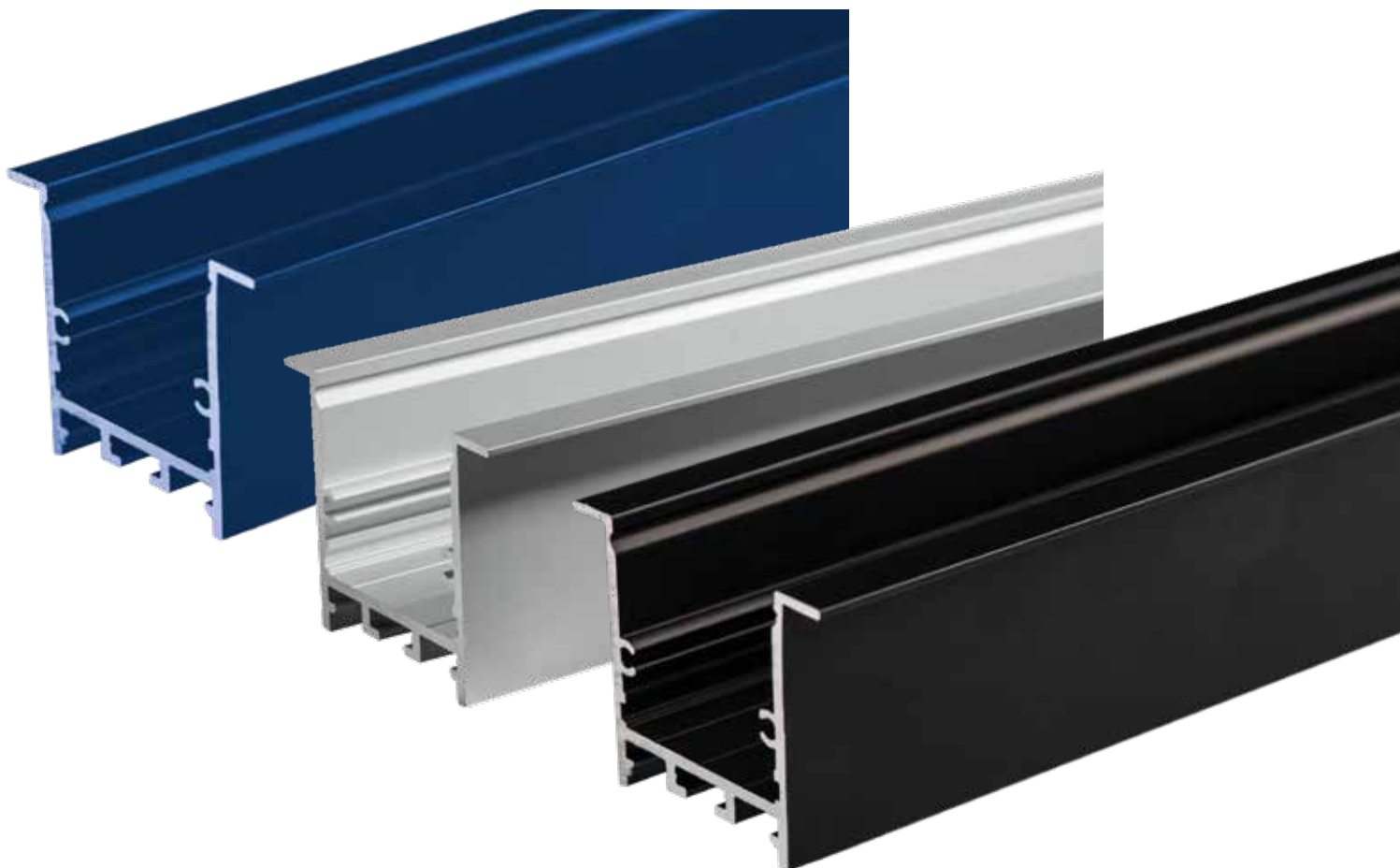
Type	Length m	Article no.
aluminum profile 18/6B	2	65205
cover, semicircular, frosted	2	65528

Accessories	Article no.
end cap in-feeder	65218
end cap	65219
mounting clamp - metal	65210



Photo: VS@fotolia.com

Special surfaces are available in every RAL colour and various surfaces, such as high gloss or hammer finish look.





AIDA Nova, Photo: Ingrid Fiebak Photography

We offer various profiles in waterproof polyurethane casting IP68, suitable for wet rooms and outdoor lighting.





Phone +49 4242 840340
info@ruteclightdesign.com
www.ruteclightdesign.com